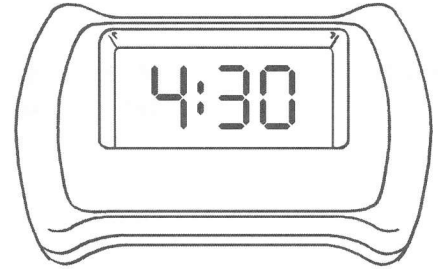
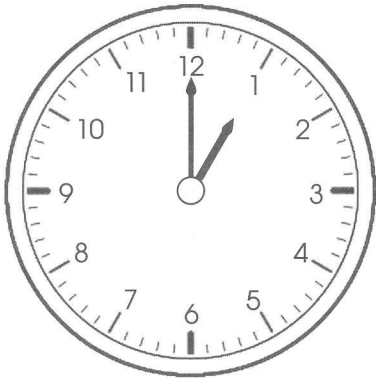
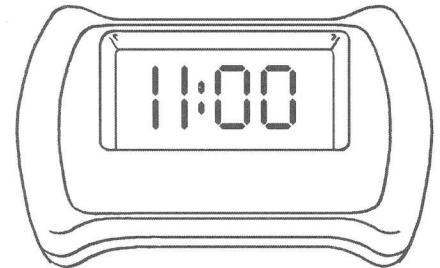
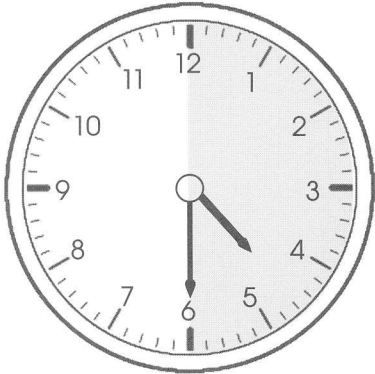


For each problem, draw a line to the clock that shows the same time.

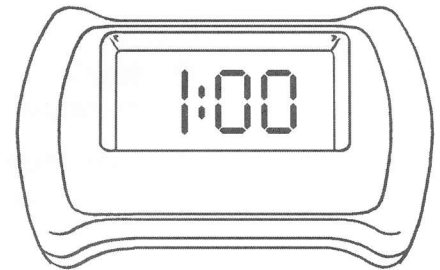
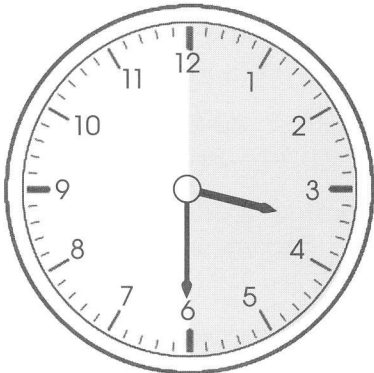
1



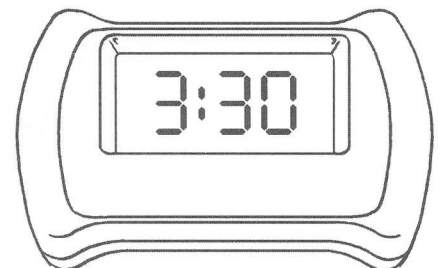
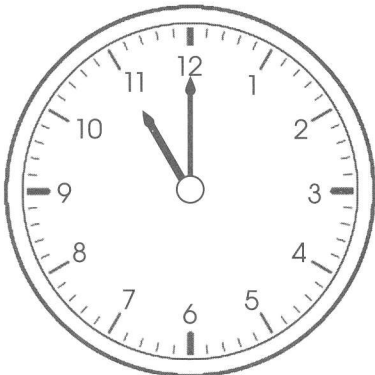
2



3



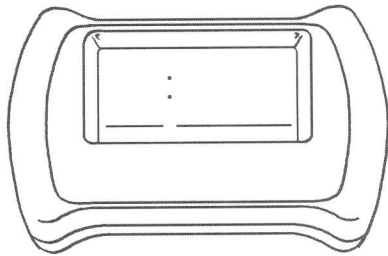
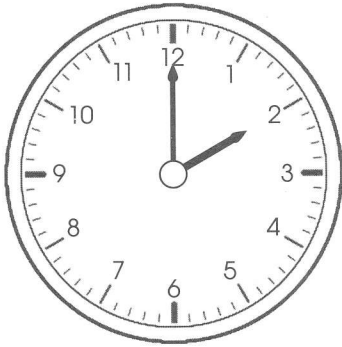
4



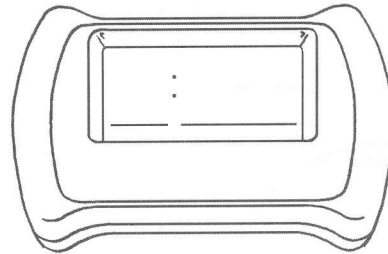
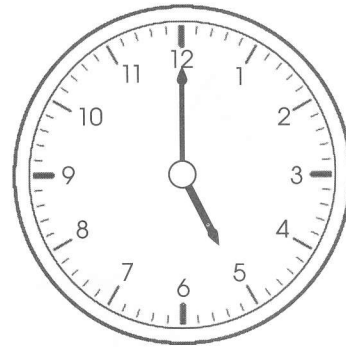
Circle a time when you are not at school.

For each problem, look at each clock. Tell and write the time.

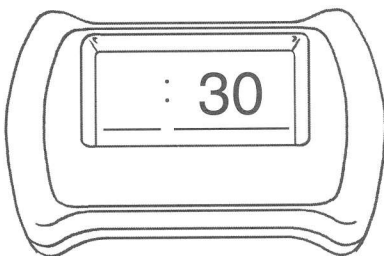
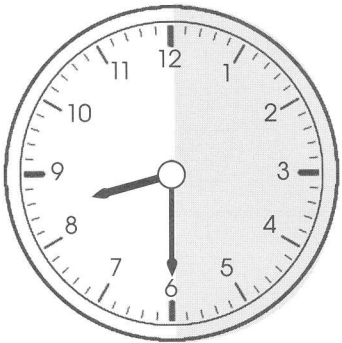
1



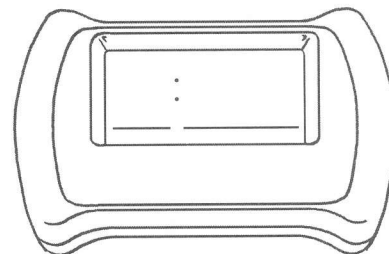
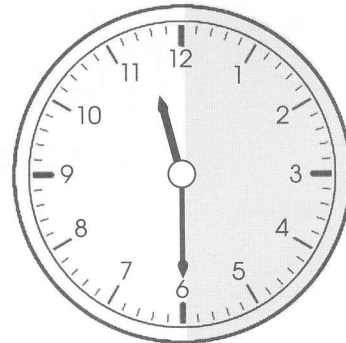
2



3



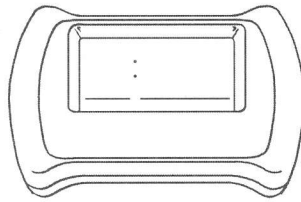
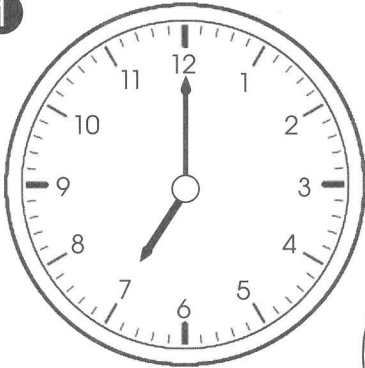
4



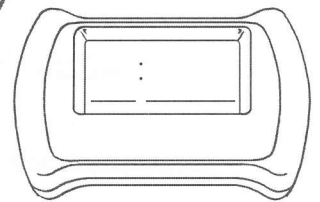
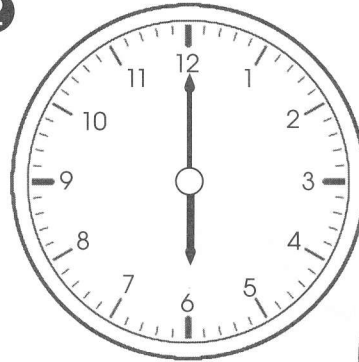
Tell how you know when it is 2 o'clock.

For each problem, look at each clock. Tell and write the time.

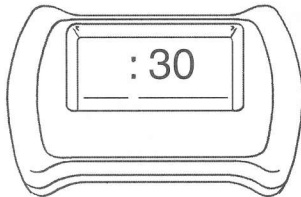
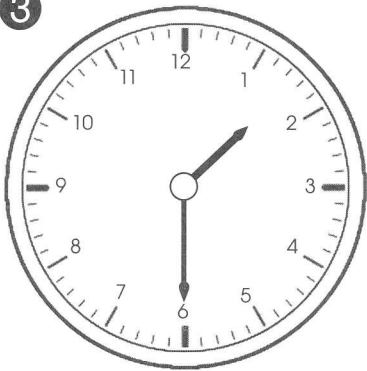
1



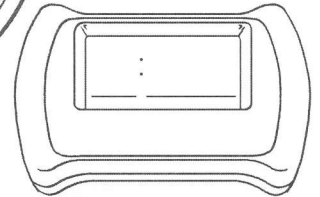
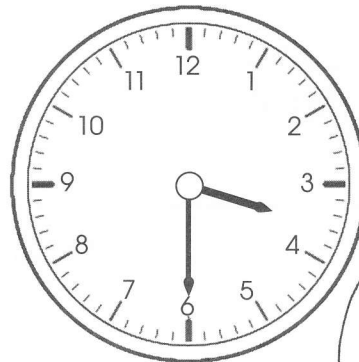
2



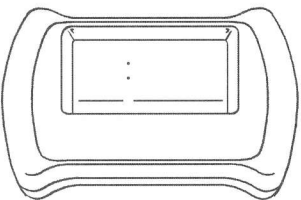
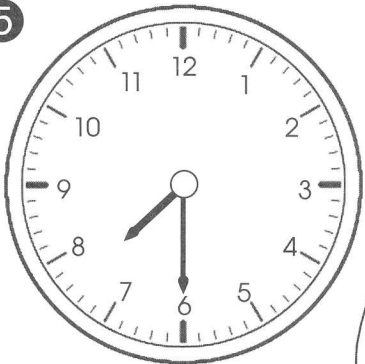
3



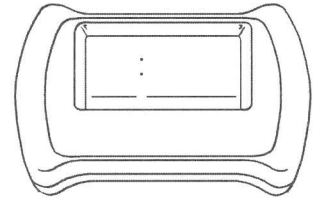
4



5



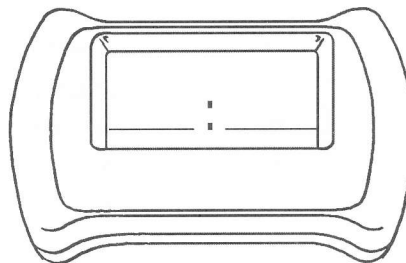
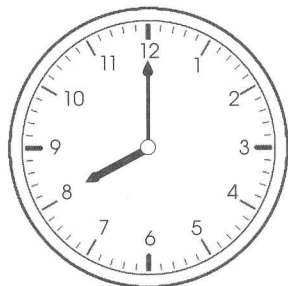
6



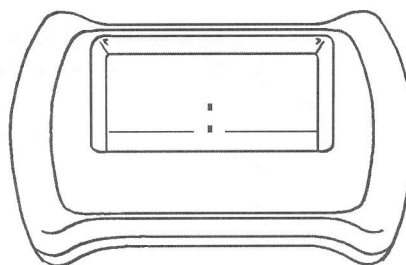
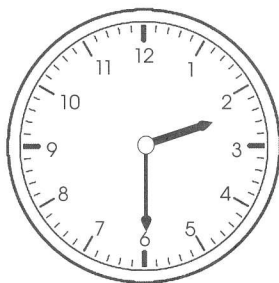
Tell how you know when it is 1:30.

Solve.

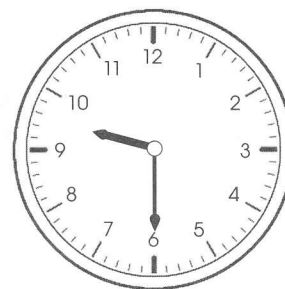
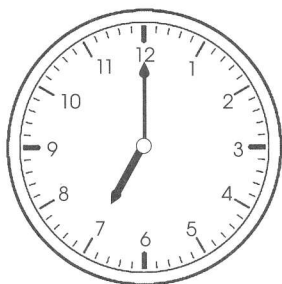
- 1 What time does this clock say?



- 2 What time does this clock say?



- 3 Circle the clock that shows 6:30.



- 4 Circle the clock that shows 3:30.

